

# Polyurethane Foam for Concrete Repair

Cost-effective methods for repairing sunken sidewalks, driveways, patios, pool decks and other concrete slabs.



Visit [sprayfoam.org](http://sprayfoam.org)

## Say Goodbye to Cracked and Uneven Concrete

Are you tired of dealing with cracked sidewalks, sunken porches and steps, uneven patios, fractured pool decks, damaged driveways, sagging parking lots, and tilted garage floors?

Polyurethane foam concrete lifting is your answer! This innovative, cost-effective, and environmentally friendly solution can restore your concrete surfaces quickly and efficiently.

### WHY DOES CONCRETE SETTLE?

- **Erosion** - Poor drainage, improperly placed downspouts, leaking drainpipes, and broken water lines are common culprits.
- **Poor Compaction** - Inadequate backfilling during construction.
- **Biological Decay** - Settlement of biodegradable debris (buried trees, construction debris, and other biodegradable materials).
- **Soil Desiccation** - Certain soils shrink during droughts.

### WHY GEOTECHNICAL POLYURETHANE FOAM?

To avoid the costly tear-out and replacement of your concrete, geotechnical polyurethane foam is the ideal choice for making repairs to all your sunken or misaligned concrete slab sections around residential structures. Not only does sunken or misaligned concrete reduce the value of your home, these uneven surfaces can cause accidents and injuries.

### HOW DOES POLYURETHANE FOAM HELP?

Polyurethane foam not only brings uneven slabs back to within 1/8" of the original height, it also reinforces the eroded area, compacts surrounding soil and fills voids.

### WHAT APPLICATION AND USES?

Polyurethane foam concrete lifting is a perfect solution for residential homes, HOA communities, commercial properties, and public municipalities to repair:

- Driveways
- Sidewalks
- Curbs
- Patios
- Garages
- Steps
- Pool Decks
- Foundations
- Leaning Chimneys
- Void Fill

### WHAT ARE THE BENEFITS OF POLYURETHANE FOAM?

#### 1. Cost Savings

Foam concrete lifting is typically half the cost of replacing concrete.

#### 2. Simplicity and Speed

Concrete removal and replacement is messy, disruptive, and can take weeks.

Polyurethane foam lifting is:

- Quick: Completed in a day.
- Ready to Use: Immediately functional within minutes after lifting.
- Non-Invasive: No heavy equipment, minimal disruption.



Concrete removal and replacement

#### 3. Environmental Savings

Replacing concrete has a large carbon footprint due to demolition, disposal, and most importantly, cement production. Foam lifting's carbon impact is less than 5% of concrete replacement.

## DID YOU KNOW?

Replacing concrete creates a large impact on the environment due to demolition, disposal, and most importantly, cement production, concrete manufacturing generates 8% of the world's carbon emissions, nearly 1/3 of that from the transportation sources.

### 4. Safety and Liability

Uneven concrete is a trip hazard and a liability risk, especially for homeowners, homeowners associations and property managers.

Polyurethane foam concrete lifting eliminates these hazards, ensuring safety for all users, including those with strollers and wheelchairs.



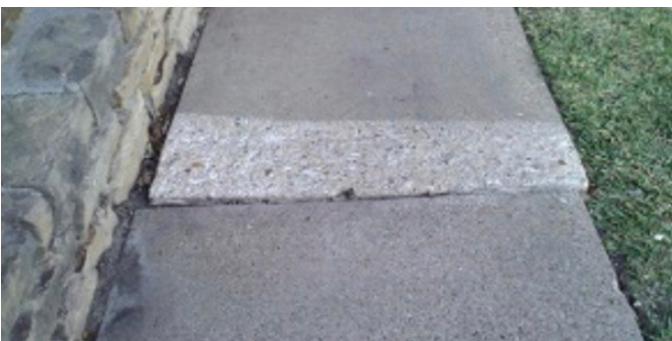
Uneven concrete

### 5. Aesthetic Consistency

Partial concrete replacement and/or edge grinding leads to mismatched colors and textures. Foam lifting preserves the original look of your concrete, maintaining aesthetic consistency without unsightly patches and surface changes.



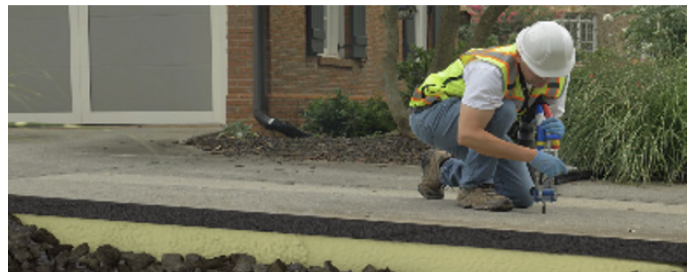
Mis-matched concrete



Unsightly grinding

### HOW IS IT DONE?

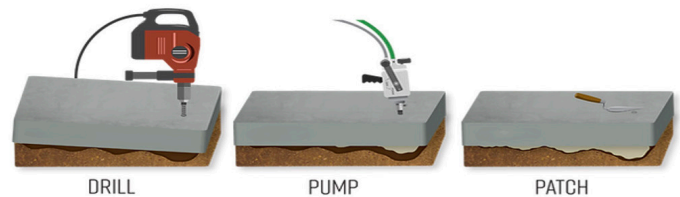
Polyurethane foam concrete lifting is a simple process. A qualified concrete lifting contractor will first evaluate the problem. Additional work may be needed to address drainage problems, removal of adjacent tree roots or other sources of damage.



Polyurethane foam concrete lifting

Small holes are strategically drilled into the affect slab. A high-density polyurethane foam injected into the holes until the slab is raised and leveled. The small holes are patched, and the slab is ready for immediate use.

If the concrete slab is cracked across its surface, both halves will be leveled but a small hairline crack will remain visible.



**Foam Concrete Lifting: Efficient, Economical, Eco-friendly.**

# MOVING FORWARD

## HOW DO I SELECT A CONTRACTOR?

- Manufacturer Certified or SPFA Accredited Contractor
- Detailed estimate of project and cost
- Contractor Insured

## CONTACT US TODAY!

Restore your concrete the smart way with Polyurethane foam lifting. Contact us now for a consultation and get a free estimate. Say goodbye to your concrete problems and enjoy smooth, even surfaces again!

### SPFA Member Contractor

Company:

Name:

Address:

Phone:

Email:

Website:



### About the SPFA

Founded in 1987, the Spray Polyurethane Foam Alliance (SPFA) is the voice, and educational and technical resource for the spray polyurethane foam industry. The Alliance is a 501(c)6 trade association comprised of contractors, manufacturers, and distributors of polyurethane foam, related equipment, and protective coatings, inspections, surface preparations, and other services. The organization supports the best practices and the growth of the industry through a number of core initiatives, including: educational programs and events; a Professional Certification Program; technical services and publications; federal and state advocacy; and networking opportunities.

Visit [sprayfoam.org](http://sprayfoam.org)